

# Land Use Management Based on Community Movement Patterns in Pajukukang District, Bantaeng Regency



Despry Nur Annisa Ahmad <sup>a,1</sup>, Ulfitasari Nur <sup>a,2</sup>, Nurfadillah Hasta <sup>a,3</sup>, AR Fuad Hasanuddin <sup>b,4</sup>

<sup>a</sup> Urban and Regional Planning, Faculty of Science and Technology, Muhammadiyah University of Bulukumba, Bulukumba, Indonesia

<sup>b</sup> Urban and Regional Planning, Faculty of Engineering, Malikussaleh University, North Aceh, Indonesia

<sup>1</sup> desprynurannisa@umbulukumba.ac.id \*; <sup>2</sup> ulfitasarinur09@gmail.com; <sup>3</sup> nurfadillahhasta14@gmail.com;

<sup>4</sup> arfuadhasanuddin@unimal.ac.id

\* desprynurannisa@umbulukumba.ac.id

Submitted: February 22, 2026 | Revised: - | Accepted: March 05, 2026

## ABSTRACT

Traffic and transportation are two interrelated aspects. The movement of people toward activity centers impacts the transportation system, where the concentration of activities leads to a need for transportation infrastructure and facilities to support this movement. This study aims to analyze the generation and distribution from eight functional areas studied through interviews, documentation, and literature review with 300 respondents. The data collection was conducted over two days, including a holiday and a workday. The results of this study are findings showed that the travel movement generation and distribution from the 300 respondents amounted to 385 movements across different origin and destination zones. Based on the Origin-Destination Matrix, land use management in Pajukukang District designated Baruga Village as a trade and service zone as well as a public space zone, Papanloe Village as an industrial zone, Borongloe Village as a worship zone, and Pajukukang Village as a health, port, and educational zone.

**Keywords:** Origin-Destination Matrix, Transportation, Land Use

This is an Open-Access article distributed under the CC-BY-SA license



## INTRODUCTION

Trip generation is a modeling step that estimates the number of trips originating from a zone or land use or the number of trips attracted to a certain land use or zone [1]. Trip generation refers to the total number of trips that occur within a unit of time in a land use zone [2]. Traffic trip distribution is part of the traffic planning process related to the movement between zones, resulting in an origin-destination matrix (ODM).

The primary objective of trip generation is to create a model that links land use parameters with the amount of movement per unit of zone or the number of movements leaving the zone. Every trip has an origin and a destination, where the origin is the zone that triggers the behavior, while the destination is the zone that attracts the action [3]. Therefore, there are two types of trip generation: Trip Production, which is the number of trips produced by a zone, and Trip Attraction, which is the number of trips attracted by a zone. Movement and attraction are modeling steps that estimate the number of movements exiting a zone or land use and the number of movements attracted to a land use or zone [4].

Bantaeng Regency is located in South Sulawesi Province, situated along the northern coast of Flores Sea and traversed by the Trans Sulawesi route, making Bantaeng Regency a vital connecting corridor in the southern region. The transportation development policy in Bantaeng Regency aims to serve as the economic lifeline of the area, supporting the movement of people, goods, and services, as well as fostering regional development and inter-regional relations. The

high volume of transportation movements in Bantaeng Regency is influenced not only by internal movements but also by movements from other regions, as Bantaeng Regency is part of the Trans Sulawesi route.

In the Regional Spatial Planning (RTRW) of Bantaeng Regency for 2012-2032 [5], Pajukukang District has been designated as a Strategic Area for the Regency. Research conducted in Bantaeng Regency identifies Pajukukang District as the center for transportation movement distribution, which encompasses five villages serving as daily activity hubs due to the ease of transportation access, ultimately leading to increasing residential density in Pajukukang District. The research problem formulated in this study is to explore the relationship of movement between zones in relation to land use. This study will illustrate the desired movement lines in several functional areas of Pajukukang District, Bantaeng Regency. The aim of this research is to establish the relationship of movement between zones associated with land use, quantified by the amount of movement connecting these zones.

## METHODS

The methods in this research begin with data collection, analysis of population movement (Origin-Destination Matrix), Sturges' method, and mapping analysis using a quantitative research approach.

### *Data Collection*

This research was conducted in Bantaeng Regency, specifically in Pajukukang District, over a period of 2 days, covering both a weekday and a weekend, in 8 functional areas (residential, healthcare, open spaces, industrial, port, trade and services, religious, and educational) located in Pajukukang District. The data collection method used two data sources: primary data (interviews) and secondary data (literature review).

### *Population Movement Analysis*

The Origin-Destination (OD) Matrix, or movement matrix, is a matrix that shows the volume of movement from the origin zone to the destination zone [6]. This analysis is used to determine the generation and attraction of traffic movements between residential zones [7]. Population movement analysis begins by examining the distribution of movement using the Origin-Destination Matrix method, which is a two-dimensional matrix containing information on movements between places (zones) within a specific region [8]. This analysis is based on the identification of public movement, referring to respondents' (public) access to various alternative conditions. The population displacement analysis starts with examining the distribution of movement using the Origin-Destination (OD) matrix method, a two-dimensional matrix that contains information about movements between specific areas. The OD survey, conducted under existing conditions, aims to forecast movement generation and attraction [9]. The structure of the origin-destination matrix can be shown in Table 1.

**Table 1** Origin-Destination Matrix

Origin/Destination	1	2	3	....	N	O <sub>i</sub>
1	T <sub>11</sub>	T <sub>12</sub>	T <sub>13</sub>	.	T <sub>1N</sub>	O <sub>1</sub>
2	T <sub>21</sub>	T <sub>22</sub>	T <sub>23</sub>	.	T <sub>2N</sub>	O <sub>2</sub>
3	T <sub>31</sub>	T <sub>32</sub>	T <sub>33</sub>	.	T <sub>3N</sub>	O <sub>3</sub>
.	.	.	.	.	.	.
.	.	.	.	.	.	.
.	.	.	.	.	.	.
N	.	.	.	.	T <sub>Nn</sub>	O <sub>n</sub>
D <sub>d</sub>	D <sub>1</sub>	D <sub>2</sub>	D <sub>3</sub>	.	D <sub>n</sub>	T

Source : Tamin (2002)

Where :

T<sub>id</sub> = Movement from origin zone i to destination zone d  
O<sub>i</sub> = The total movement originating from origin zone i



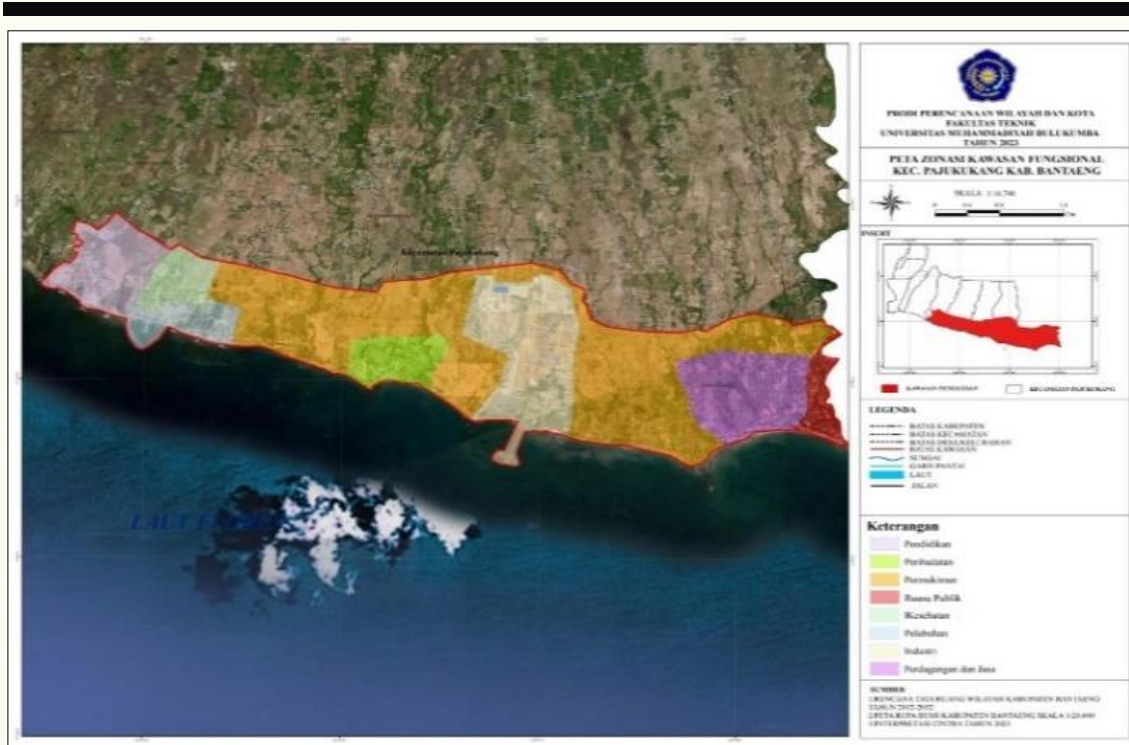


Fig. 2. Zoning map of the functional area in Pajukukang District

The results of the recapitalization of calculations regarding age, gender, occupation, and origin-destination using questionnaires in 8 distribution areas of community movement in Pajukukang District, Bantaeng Regency, can be seen in the table below.

Table 2 Recapitulation Of Age and Gender

No	Age (Year)	Amount (Soul)	Gender	
			Woman	Man
1	11-15	23	6	17
2	16-20	40	19	21
3	21-25	44	15	29
4	26-30	46	22	24
5	31-35	45	28	17
6	36-40	53	18	35
7	>40	49	15	34
Amount		300	123	177

Source : Field Survey, 2023

The table above shows the recapitalization results of age and gender, indicating that in the age group of 36-40 years, there is a higher number of respondents, with 35 males and 18 females. In contrast, the age group of 11-15 years has the lowest number of respondents, consisting of 6 females and 17 males.

Table 3 Job Recap

No	Job	Amount (Soul)
1	Student/University Student	78
2	Civil Servant	34
3	Housewife	46
4	Trader/Entrepreneur	53
5	Fisherman	20
6	Laborer	19
7	Farmer	21
8	Employee	13
9	Security Personnel	3
10	Nurse	13
Amount		300

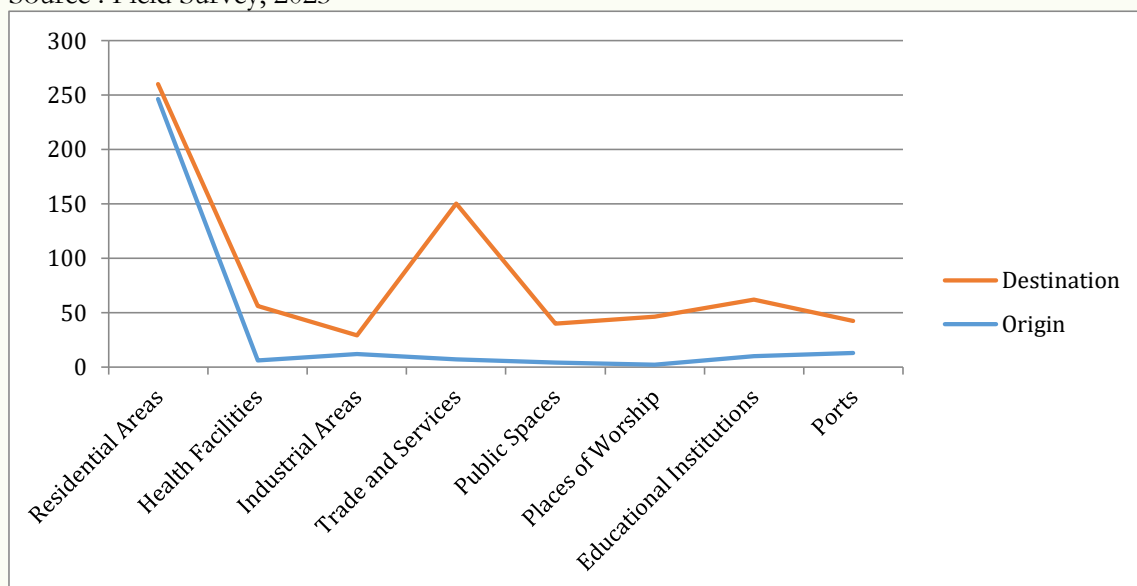
Source : Field Survey, 2023

The table above reveals the recapitalization of occupations, indicating that the student/university student category has the highest number of respondents, totaling 78 individuals. In contrast, the security category has the lowest number of respondents, with only 3 individuals.

**Table 4** Recapitulation of Origin and Destination

No	Region	Amount (Soul)	
		Origin	Destination
1	Residential Areas	246	14
2	Health Facilities	6	50
3	Industrial Areas	12	17
4	Trade and Services	7	143
5	Public Spaces	4	36
6	Places of Worship	2	44
7	Educational Institutions	10	52
8	Ports	13	29
Amount		300	385

Source : Field Survey, 2023



**Fig. 3** Graph of Origin and Destination

The table and Fig. 3 indicates that the recapitalization of origin and destination shows a total of 300 respondents, with passenger origins and destinations distributed across various functional areas, including residential, health, open spaces, industrial zones, ports, trade and services, places of worship, and educational institutions, resulting in a total of 385 destinations.

The trip generation process consists of trip origins and trip attractions[14]. Based on the recapitalization at the 8 functional areas with a total of 300 respondents, the following table provides insight into the traffic flow from origin zones to their respective destinations.

**Table 5** Origin Destination Matrix

No	Destination		A	B	C	D	E	F	G	H	Origin
	Origin										
1	A			46	17	115	35	37	51	29	330
2	B		5		-	3	-	1	-	-	9
3	C		2	1		8	-	-	-	-	11
4	D		-	-	-		-	2	-	-	2
5	E		-	-	-	3		3	-	-	6
6	F		1	-	-	1	-		-	-	2
7	G		4	1	-	4	1	1		-	11
8	H		2	2	-	9	-	-	1		14

No	Destination Origin	A	B	C	D	E	F	G	H	Origin
Total Goal		14	50	17	143	36	44	52	29	385

Source : Analysis Results, 2023

Pajukukang Village is designated as a health zone, port zone and education zone. Information :

- A = Residential
- B = Health
- C = Industrial
- D = Trade and Services
- E = Public Space
- F = Place of Worship
- G = Education
- H = Port

Analysis of the origin-destination matrix in Pajukukang District shows the total number of trips, namely 385 trips, as shown in the calculated T value. Traffic generation is then determined based on data analysis from questionnaires distributed to residents. The Desire Line is a straight line that depicts the relationship between the origin and goal of a movement. The flow of movement has a direction and quantity that describes the size of passengers and goods. The Sturges method is a rule for determining how widely selected data is in a bar graph on a histogram [15]. In using Sturges' rules, the initial steps taken are determining the maximum and minimum values as well as determining the amount of data, class range, class interval and class length. The following is the use of Sturges' rule for determining intervals in making desire line maps.

Determination of Max and Min values.

Max Value = 115

Min Value = 1

Determining Class

Intervals Class Range = Max Value – Min Value  
= 115 - 1  
= 114

Determining the amount of data

Number of Data (N) = 27

Ranges Determining Class

Class Interval =  $1 + 3(\text{Log}N)$   
=  $1 + 3 (\text{Log } 27)$   
= 5.72

Determining Class Length

Class Length = Class Range : Class Interval  
= 114 : 5.72  
= 20

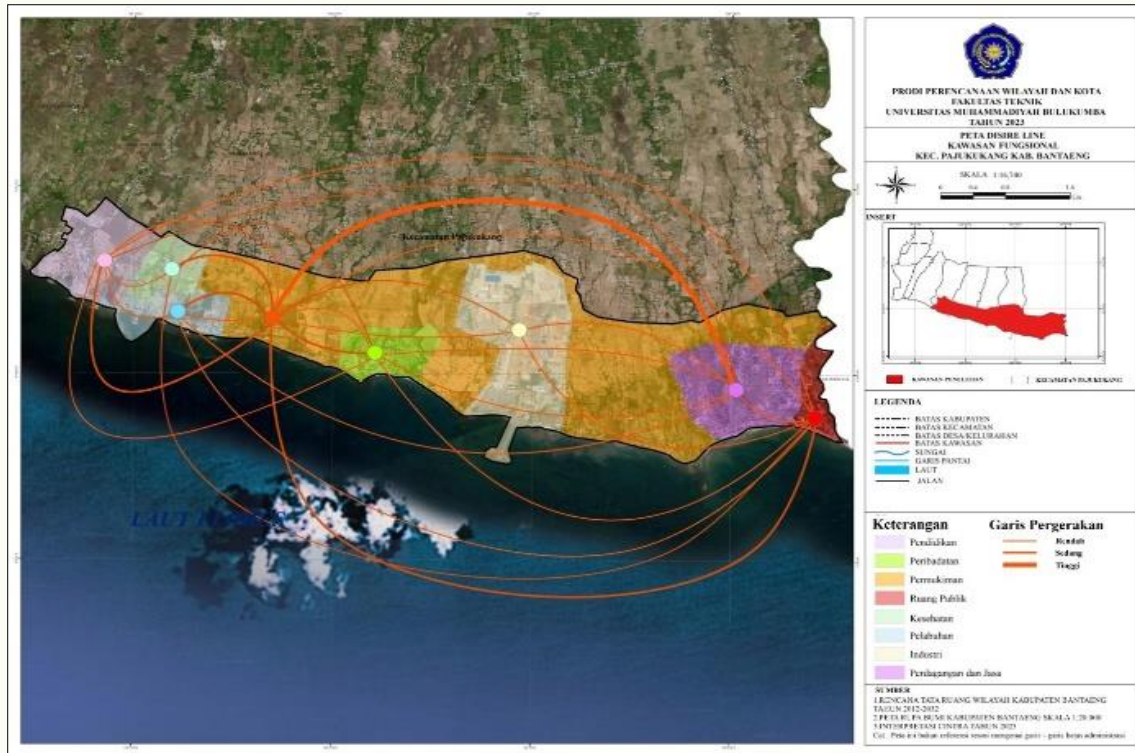
So that it produces a line classification value, namely:

**Table 6** Intervals for Determining Management Direction Desires

No	Movement	Frequency	Classification of Desire Lines
1	1-21	21	Low
2	22-42	1	Low
3	43-63	4	Currently
4	64-84	0	Currently
5	85-105	0	Tall
6	106-126	1	Tall
Total Movement		27	

Source: Analysis Results, 2023

The trips of 300 respondents based on the results of the questionnaire, observed from the origin and destination of the journeys, can be seen in the following desire line map.

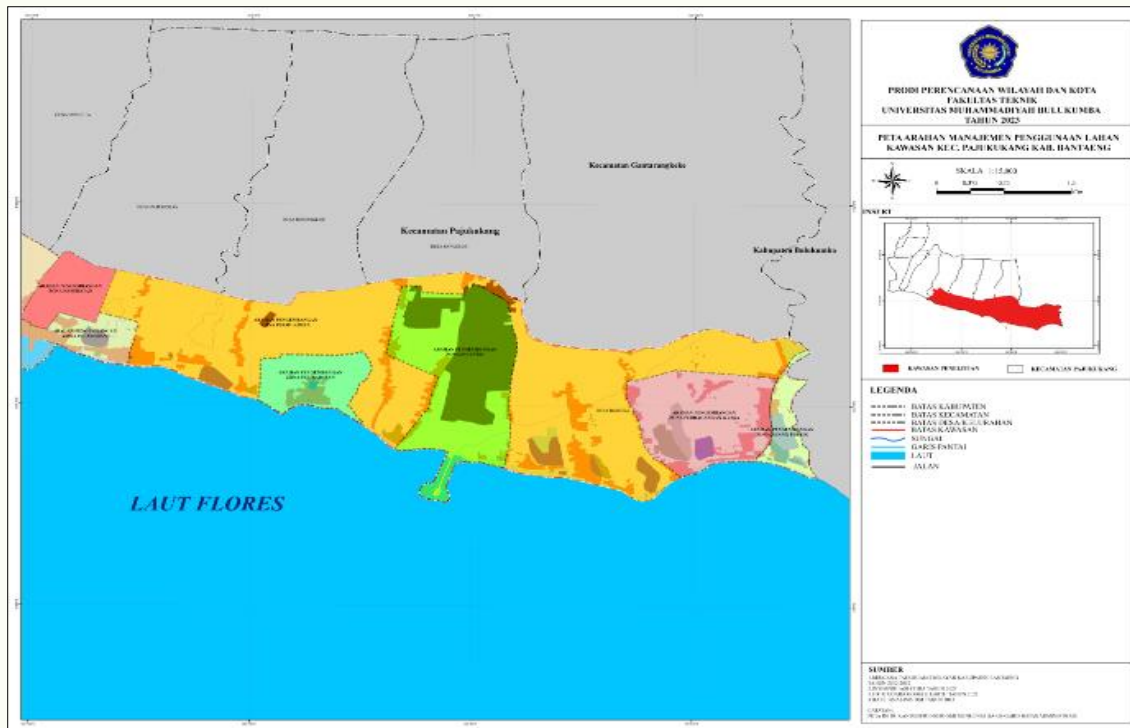


**Fig. 4** Desire Line Map of Functional Areas in Pajukukang District

Based on the map above, it can be observed that there are 8 existing activity centers in Pajukukang District, which are interconnected with one another. Land use can be grouped into two broad categories: agricultural land use and non-agricultural land use. Land use can be depicted as an organized space. Organized means making an effort to plan land use in a given area, dividing it into special zones or functions. The Origin-Destination Matrix (MAT) can provide detailed indications of movement needs, playing a crucial role in various traffic planning and management studies, while desire lines help illustrate the direction of movement [16].

Actions known as trip generation determine what mode of transportation is needed to facilitate movement [17]. The direction of land use management aims to organize land use according to its capabilities to achieve a balance between land capability and the types of technological utilization [18]. Movements resulting from activities in specific zones or lands generate trip generation that includes movements leaving one zone and heading to another [19].

The direction for land use management first establishes the travel intervals based on the responses of 300 respondents from the questionnaire, considering the origin and destination of their journeys. For more clarity, please refer to the following land use management direction map.



**Fig. 5** Land Use Management Direction Map of Functional Areas in Pajukukung District

Pajukukung District land use management directions in Baruga Village have been designated as a trade and services zone as well as a public space zone, Papanloe Village has been designated as an industrial zone, Borongloe Village has been designated as a worship zone, and Pajukukung Village has been designated as a health zone, port zone and education zone. The results of the land use zoning analysis can serve as a follow-up reference in determining an appropriate multimodal public transportation system to enhance the efficiency of movement and mobility [20].

## CONCLUSION

This research involves analysis of travel patterns, the relationship between transportation and land use, as well as a survey method of 2023 household interviews to collect data. Based on the results of primary data processing, the origin destination matrix for Pajukukung District concluded that the total number of movements was 385 carried out in different origin and destination zones. The highest movement generation in the residential zone was 330 movements, while the highest movement destination was in the trade and services zone, namely 143 movements. This is related to the factors that trigger dense interaction so that the greater the function of an area, the greater the interaction generated. Pajukukung District land use management directions based on MAT can be determined that Baruga Village is a trade and services zone as well as a public space zone, Papanloe Village is designated as an industrial zone, Borongloe Village is designated as a worship zone, and Pajukukung Village is designated as a health zone, port zone and education zone.

### ACKNOWLEDGMENT

The authors express their sincere gratitude to the survey team, Andi Adel Awaridza, A. Alrin Nilam Cahya, Chusnul Chatima Y., Muhammad Amin, Putri Maharani, and Willy Ardiansyah, for their valuable contributions during the data collection process. The authors also extend their appreciation to the residents of Pajukukang District for their cooperation and for generously providing the data and information essential to this research.

### AUTHORS' DECLARATION

- Author contribution** : Conceptualization the framework of the research, D.N.A.A., AFH; Methodology, D.N.A.A., U.N., N.H; Spatial Analysis, S.S.P; Field Survey, U.N., N.H., S.S.P; Draft Preparation, U.N.
- Funding statement** : None of the authors have received any funding or grants from any institution or funding body for the research.
- Conflict of interest** : The authors declare no conflict of interest.
- Additional information** : No additional information is available for this paper

### REFERENCES

- [1] M. Kumaat, "Analisis Bangkitan Dan Tarikan Pergerakan Penduduk Berdasarkan Data Matriks Asal Tujuan Kota Manado," *TEKNO SIPIL*, vol. Volume 11 No.58, hlm. 56–65, 2013.
- [2] D. P. P. Misa, "Penggunaan Lahan Kawasan Perkotaan Berdasarkan Fungsi Kawasan," *Jurnal Spasial*, vol. 5, hlm. 171–178, 2018.
- [3] Z. Tumangger, "Analisa Bangkitan Dan Tarikan Pergerakan Penduduk Kota Subulussalam," *Universitas Muhammadiyah Sumatera Utara*, 2018.
- [4] Hn Heldha Anja Sarie, "Kajian Pola Sebaran Pergerakan Masyarakat Pulau Bengkalis," 2020.
- [5] Peraturan Daerah, "Rencana Tata Ruang Wilayah Kabupaten Bantaeng Tahun 2012-2032," 2012.
- [6] N. Ratnaningtyas, P. Rahayu, dan T. Istanabi, "Potensi Penerapan Konsep Kota Kompak Di Kota Depok Dari Aspek Tata Guna Lahan Dan Sistem Transportasi," Surakarta, 2022. [Daring]. Tersedia pada: <http://jurnal.uns.ac.id/jdk>
- [7] R. Adekmas Senna, E. T. Mukti, dan R. S. Suyono, "Penataan Manajemen Lalu Lintas Jalan Supadio Dan Jalan Mayor Alianyang Kubu Raya Akibat Pembangunan Kawasan Komersial Terpadu Bumi Raya City," 2020.
- [8] S. N. Fuady, Divia Indira Arifin, dan Aleksander Purba, "Bangkitan dan Tarikan pergerakan Di Kota Bandar Lampung," *Jurnal Transportasi*, vol. 21 No. 1, hlm. 37–44, 2021.
- [9] T. H. Aprilliansyah, "Perkiraan Distribusi Pergerakan Penumpang," *Jurnal Online Institut Teknologi Nasional*, vol. 1, no. 1, hlm. 29–40, 2015.
- [10] F. Ramdhani, "Pemetaan Pergerakan Masyarakat Kabupaten Rokan Hulu Provinsi Riau Dengan Sistem Informasi Geografis (Sig)," *Rabit : Jurnal Teknologi dan Sistem Informasi Univrab*, vol. 4, no. 2, hlm. 86–98, Jul 2019, doi: 10.36341/rabit.v4i2.718.
- [11] A. Massara, P. A. Hartini, H. Hatta, dan I. A. Purbani, "Model Bangkitan Pergerakan Kendaraan (Studi Kasus Kawasan Kampus Universitas Muhammadiyah Makassar)," *JURNAL TEKNIK SIPIL - MACCA*, vol. VOL.5 NO.1, hlm. 25–34, 2020.
- [12] Badan Pusat Statistik Daerah Kabupaten Bantaeng, "Kabupaten Bantaeng dalam Angka Tahun 2022," 2022.
- [13] Badan Pusat Statistik Kabupaten Bantaeng, "Kecamatan Pajukukang dalam Angka Tahun 2022," Kabupaten Bantaeng, 2022.
- [14] O. Z. Tamin, *Perencanaan dan pemodelan transportasi*. Penerbit ITB, 2000.
- [15] A. Sitti Chairunnisa, S. Asri, L. Bochary, M. Rizal Firmansyah, dan dan Zulkifli, "Model Sebaran Pergerakan Di Kawasan Gugus Pulau Kecamatan Liukang Tupabbiring Kabupaten Pangkep," 2018.

- 
- [16] W. Widianingrum, I. Isa, A. Wicaksono, dan H. Bowoputro, “Model Tarikan Pergerakan Dan Pola Sebaran Pergerakan Pada Kawasan Industri Agrobisnis Jabung,” Malang, 2017.
- [17] A. Mahindera Putra, Syafi'i, dan S. Jauhari Legowo, “Analisis Model Tarikan Pergerakan Pada Universitas (Studi Kasus Di Wilayah Surakarta),” *e-Jurnal MATRIKS TEKNIK SIPIL*, vol. Vol. 1 No. 4, hlm. 393–400, 2013.
- [18] W. M. Sari, O. Darnius, dan P. Sembiring, “Perbandingan Keakuratan Dari Model Tabel Distribusi Frekuensi Berkelompok Antara Metode Sturges Dan Metode Scott,” *Talenta Conference Series: Science and Technology (ST)*, vol. 1, no. 1, hlm. 001–009, Okt 2018, doi: 10.32734/st.v1i1.182.
- [19] M. Akbar, D. S. Nababan, dan M. I. Kholid, “Analisis Pola Bangkitan Lalu Lintas Dengan Menggunakan Metode Matriks Asal-Tujuan,” vol. 9, no. 2, hlm. 56–65, 2020.
- [20] D. Zhao, A.-S. Mihăiță, Y. Ou, H. Grzybowska, dan M. Li, “Origin–destination matrix estimation for public transport: A multi-modal weighted graph approach,” *Transportation Research Part C: Emerging Technologies*, vol. 165, 104694, 2024, doi:10.1016/j.trc.2024.104694.